



**Helper arm  
OK-08.3113**

**Distributor:**

Auto Partner SA  
Ul. Ekonomiczna 20  
43-150 Bieruń  
[www.rooks.pl](http://www.rooks.pl)

# Contents

<b>10. General Information of help arm.....</b>	<b>2</b>
10.1 Usage.....	2
10.2 Technical Data.....	2
10.3 Safety regulations.....	2
<b>11. Structure .....</b>	<b>2</b>
<b>12. Installation and adjusting.....</b>	<b>3</b>
12.1 Installation.....	3
12.2 Transport .....	3
12.3 Workplace requirements.....	3
12.4 Assembly.....	3
12.5 Test.....	5
<b>13. Operations.....</b>	<b>5</b>
13.1 Clamping the tire.....	5
13.2 Demounting the tire .....	6
13.3 Mounting the tire.....	7
<b>14. Spare parts list.....</b>	<b>8</b>
<b>15. Exploded drawings① .....</b>	<b>10</b>
<b>16. Exploded drawings② .....</b>	<b>11</b>
<b>Appendix 1 : Air passage diagram .....</b>	<b>12</b>

## 10. General Information of help arm

### 10.1 Usage

The right help arm has been designed as a tire changer accessory to help the operator to mount or demount tires, especially when mounting or demounting very low-profile and run- flat wheels of car and light commercial vehicles.

Before any operation of this machine, the operator is requested to read the manual carefully. Do not attempt any operations that are not stated in it. Manufacturer shall not be liable for any injury or damage caused by improper operation.

### 10.2 Technical data

Working pressure : 8~10bar ;

Noise level :  $\leq 70\text{dB(A)}$ ;

Net weight : 81kg①; 69kg②

### 10.3 Safety regulations

- This device is especially reserved to trained professional personnel or somebody who have experiences on mechanical operation and read this manual carefully.
- This device must be used together with the tire changer appointed by manufacturer.
- Manufacturer won't be responsible for any unauthorized modifications.

## 11. Structure

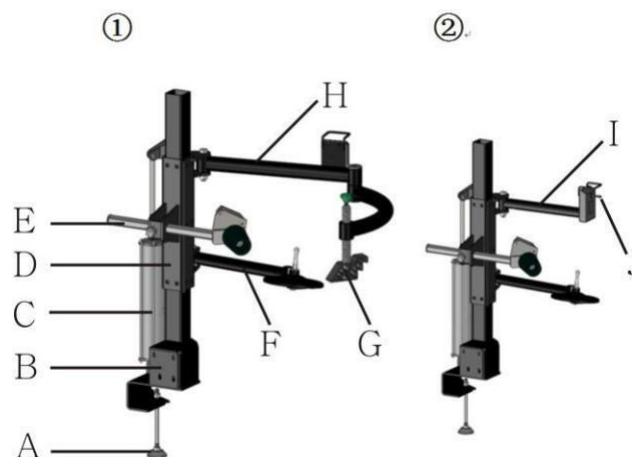


Fig.1

Help arm structure as Fig. 1 shows

No.	Item	No.	Item	No.	Item
A	Support foot	E	Tire pressing arm	I	Tire pressing arm
B	Body support	F	Tire lifting arm	J	Switch Handle
C	Up & down cylinder assemble	G	Tire pressing head		
D	Sliding device	H	head Moveable arm		

Remark : Part ① is separately installed on the right side; Part ② should be installed together with a left help arm, to make double help arm.

## 12. Installation and adjusting

### 12.1 Installation

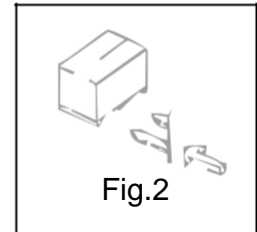
#### NOTE !

- ☐ The installation of this auxiliary device should be done by professional personnel.
- ☐ Before assembly, disconnect the device from power supply and air source.



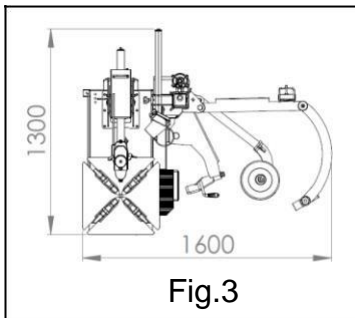
### 12.2 Transport

Move the device with a forklift truck as illustrated in **Fig.2**



### 12.3 Workplace requirements

Fig.3 shows maximum space requirements and minimum distance of 500mm from walls.



### 12.4 Assembly

#### 12.4.1 Support foot connection

As Fig.4, Install Support foot C into screw M16 (B), screw C into A completely, keep screw B loose till A is installed onto the main body.

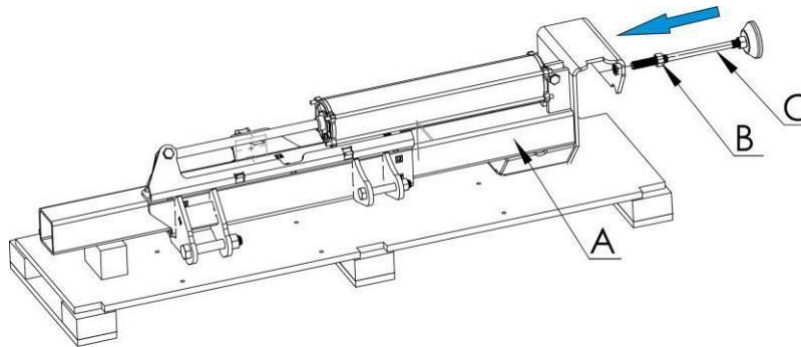


Fig.4

#### 12.4.2 Connect with main body

- ☐ Disconnect tire changer from power supply and air source. Open side cover of tire changer.
- ☐ As Fig.5, Put arm A onto frame M. Find and match installing holes. Install screw F(M10\*35), washer E and flat washer D downward; The same way, as the direction show in Fig. 5, install screw G(M10\*35), washer H and flat washer I into frame M, keep screw loose, put plate J on (Plate J is placed between arm and frame), tight six pieces screw with wrench.
- ☐ As Fig.5 Adjust support foot, keep it well touched with ground, tighten B (M16) upward.

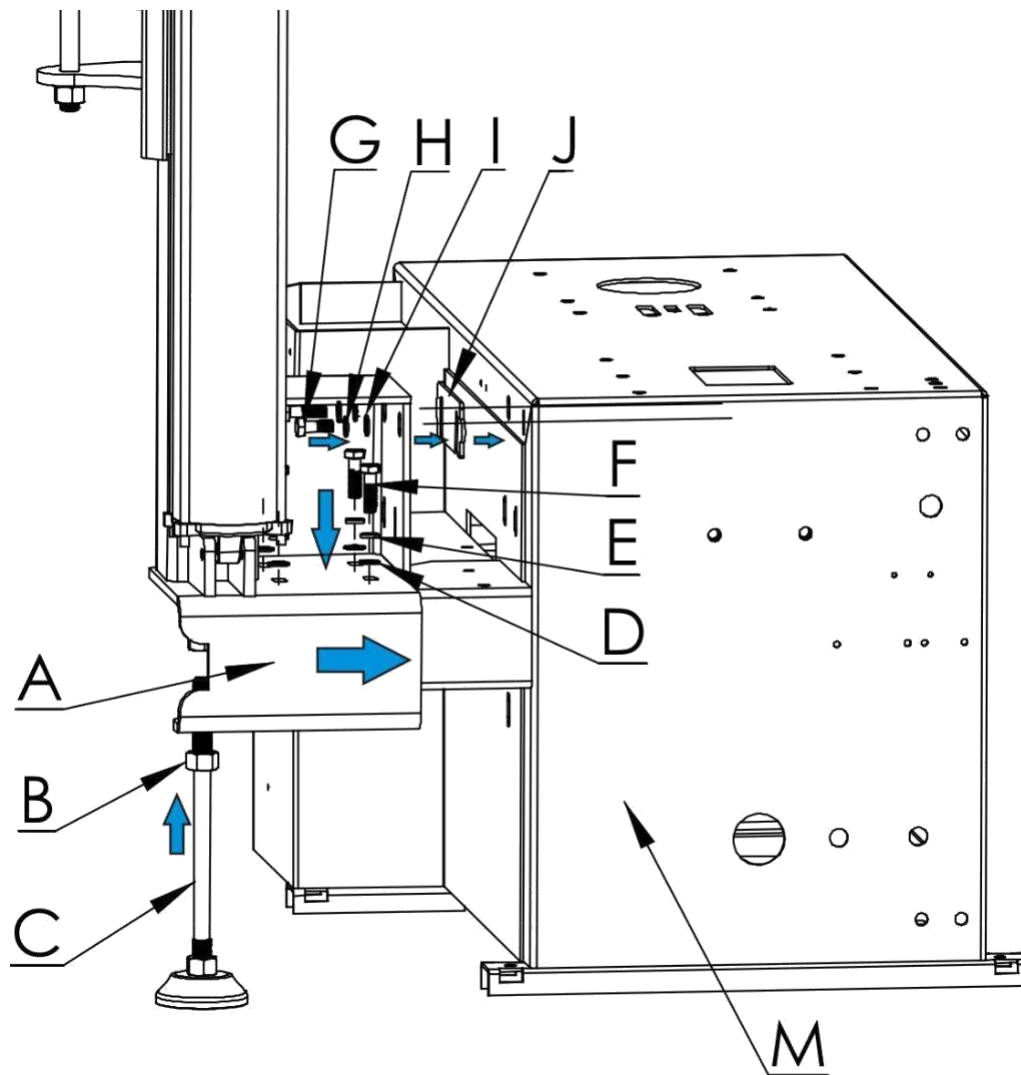


Fig.5

#### 12.4.3 Functional parts assemble

- As Fig.6, Install part B, part C, part E with wrench, screws and flat washers, make ~~se~~ screws are fastened.

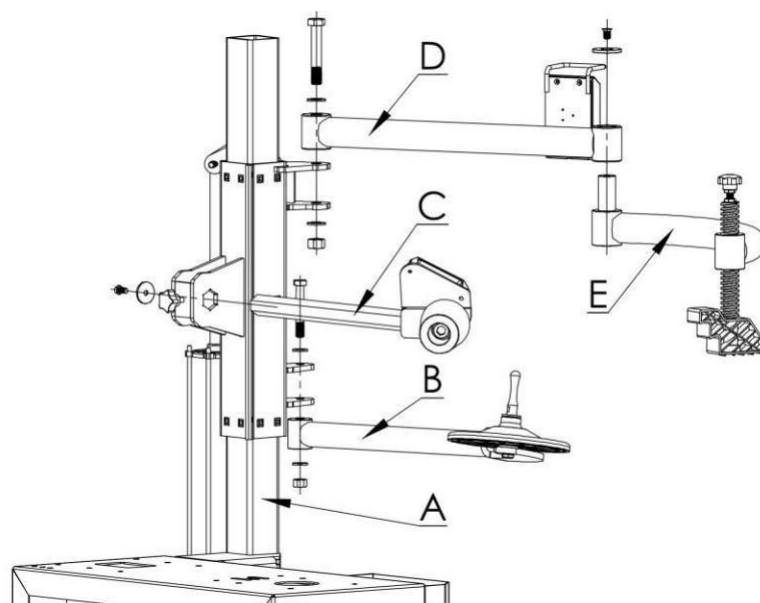


Fig.6

#### 12.4.4 Air connection

- ☐ As Fig. 7, Connect air hose Q to four way connection Z through the rear hole of the body.
- ☐ Install back side cover of body.

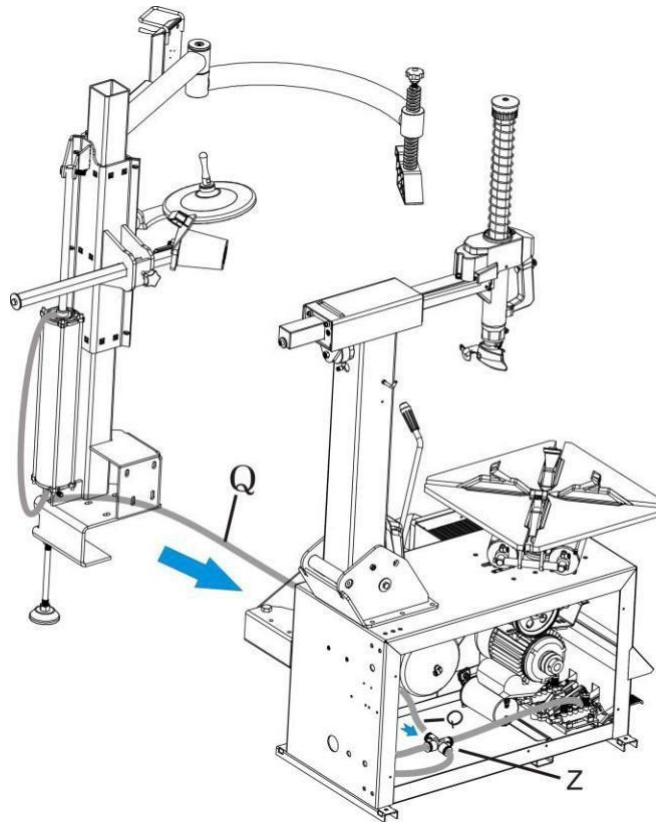


Fig.7

#### 12.5 Test

- ☐ The device must connect with power supply and air compressor, and the air pressure from 8 bar to 10 bar is desirable.
- ☐ After power and air connected, pull handle switch J, double check if all parts on the help arm working well.
- ☐ Safety and Warning sign

#### Warning :

- ☐ Please change the safety signs if it gets blurred or lost.
- ☐ Do not operate the machine when safety sign gets lost.
- ☐ The safety signs must be kept within the sight of the operator.
- ☐ If necessary, you can place warning sign on the machine as picture on the right.



### 13. Operation

This help arm has been designed to facilitate the operations of wheel locking and mounting/demounting. In any case, this device would make these jobs easier on any type of wheel.

#### 13.1 Clamping the tire

- ☐ Release the beads both sides of tire as tire changer manual stated, clamp the tire from outside (Fig.8). Depress the corresponding pedal to open the jaws till big enough for rim

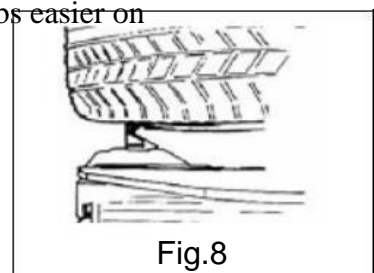


Fig.8

clamping; Put the tire on the turntable, depress the corresponding pedal to close the jaws for clamping the tire.

**⚠ NOTE: When using right help arm, outside clamping is strongly suggested, inside clamping is not as safe as outside clamping.**

### 13.2 Demounting the tire

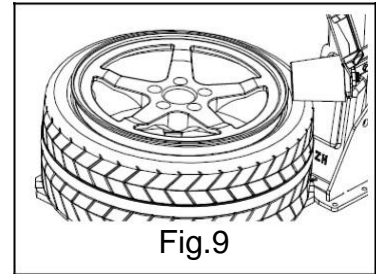
1) Put tire on the turntable and clamp it, if necessary, loose tire bead as Fig.9.



Pull pressing arm out to make sure tire pressing roller is above tire edge, do not touch with the rim.



Turn switch handle downward, the roller press the tire. Depress the pedal to turn the turntable to loosen the bead.



**⚠ NOTE : Lubricate the bead before**

**operation 2) Demounting the upper bead**



Close mounting head A to upper bead. Pull out pressing arm C and Pressing roller is placed on the tire. Turn switch handle D downward, Insert lifting lever B into clearance between the rim and bead as Fig.10.



Raise pressing arm C and pull it back. Turn pressing head E to the opposite side of the mounting head, press tire by turning switch handle D downward, pull lever B on the mounting head and make it parallel with the surface of rim as Fig.11.



Rise help arm, push tire pressing head to its non-working position.



Depress pedal Z to turn the turntable, with the help of mounting head, the upper bead will be detached off as Fig. 11.

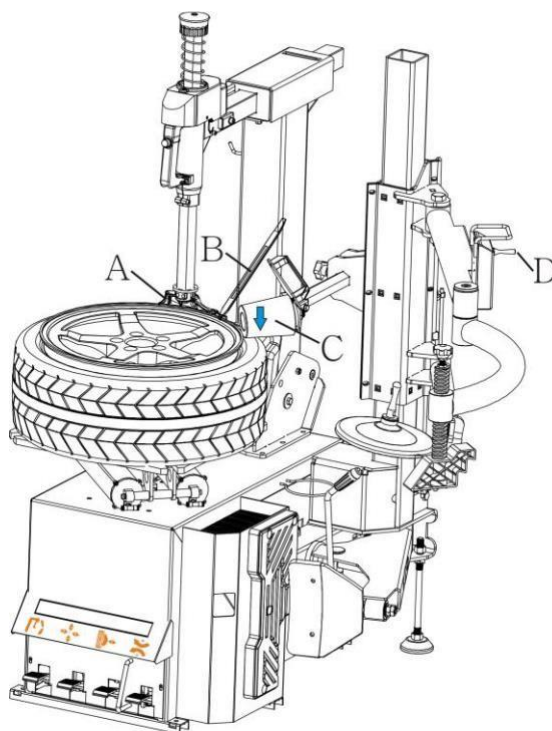


Fig.10

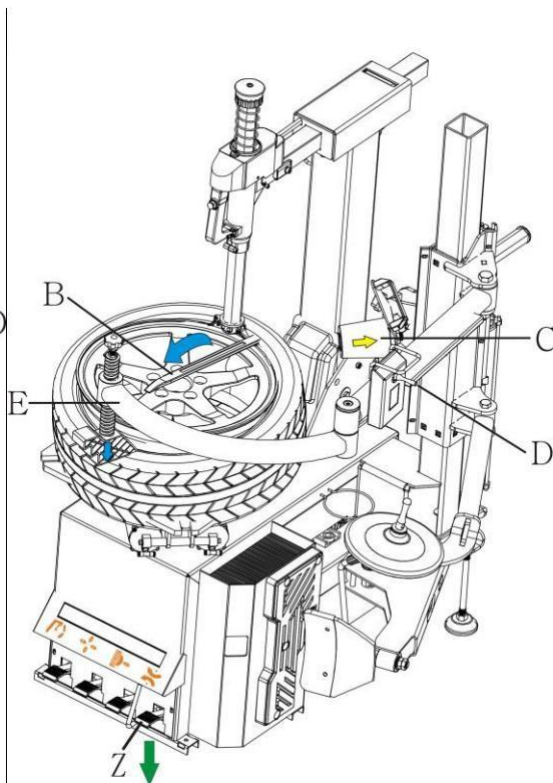


Fig.11

3) Demounting the bottom bead



Rotate roller arm F to make tire lifting roller under tire, and make sure it is close to the tire other than touch rim as Fig.12.



Depress the pedal Z to turn the turntable, meanwhile turn switch handle upward to rise slowly to detach the bottom bead with the tire lifting roller F as Fig.12.

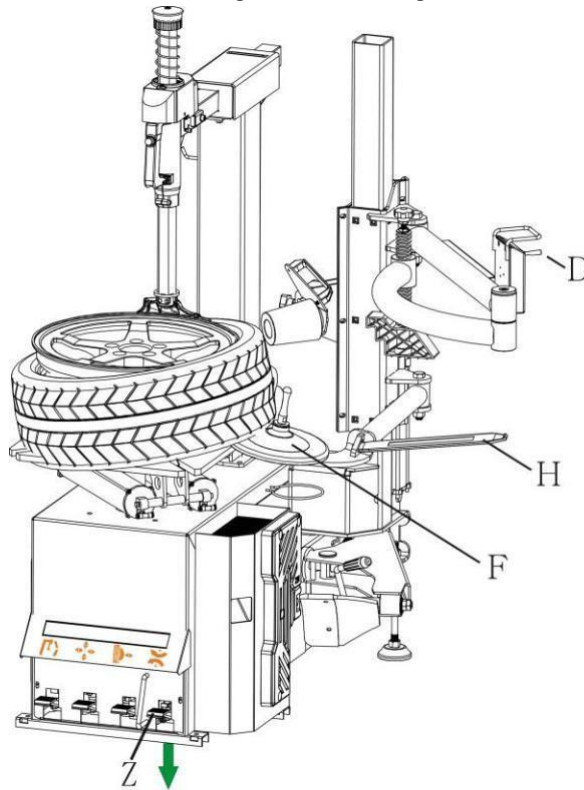


Fig.12

13.3 Mounting tire



Lubricate tire bead, let rim wear tire, hang tire on the rim, move mounting head to the edge of rim and closely touched, depress the pedal to turn the turntable and mount bottom bead.



Turn switch handle D upward to raise help arm, pull pressing roller C on the tire; turn pressing head E to the position as Fig.13. Turn switch handle D downward and help arm goes down, press roller press tire under mounting head, to protect tire bead, mounting head at the same time press tire bead below the rim as Fig.13.



**NOTE : Rim can not be pressed by pressing head and roller during operating, it is very dangerous;**



Press pedal Z to turn the turntable together with tire pressing head, mount upper bead with the help of mounting head as Fig.13.



**NOTE : Stop operation if stuck occurred, to protect tire, lift pedal Z, turntable will go backward. Adjust pressing roller and pressing head, operate as Fig.13 again.**



**NOTE : People except the operator must stay away from the machine during its operation.**



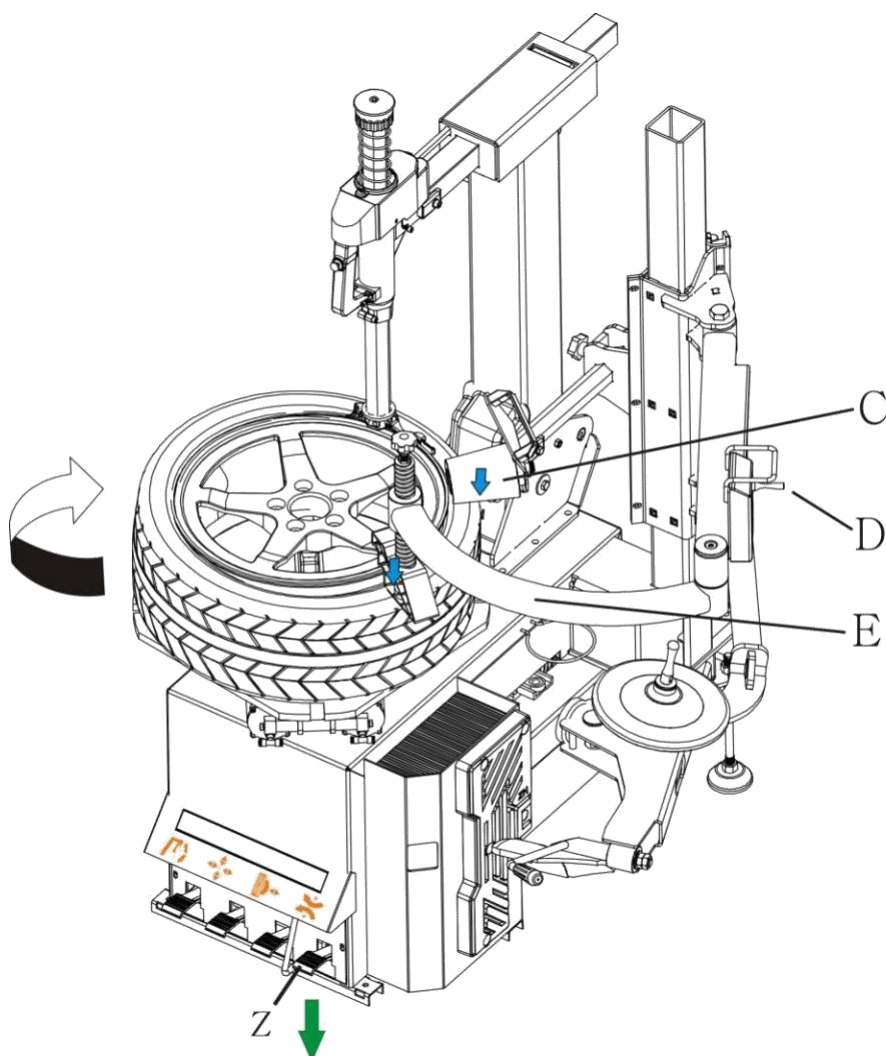


Fig.13

#### 14. SPARE PARTS LIST

This list is only for the reference of the maintenance personnel. The manufacturer will not be held responsible for any use other than the designed purpose. In case any damage occurs, please contact your dealer or factory with the corresponding codes in the list

SPARE PARTS LIST							
No.	code	Description	Qty.	No.	code	Description	Qty.
1011812 主机① (图 14)							
R801	2065669	column	1	R830	6000426	Washer 12*37*3	1
R802	2065675	Main slide	1	R831	3002101	Lifting roller	1
R803	2065681	Slide	1	R832	2065705	Pin of Lifting roller	1
R804	2065716	Adjust handle M12*35	1	R833	6000135	Flat washer 12*20*2	1
R805	6000106	Screw M8*25	6	R834	6000212	Screw M12*30	1
R806	3005267	Slide	10	R835	2065709	pressing roller rod	1
R807	6000148	Nut M8	6	R836	6000103	Screw M8*16	2
R808	2065687	Arm	1	R837	2065714	Handle	1
R809	2065697	Screw M20*120	1	R838	6000428	Nut M20	1

R810	6000141	Washer 20	2	R839	6000191	Screw M8*30	1
R811	6000146	Nut M20	1	R840	6000139	Flat washer 8*22*2	1
R812	4000301	Risefall control valve	1	R841	3005105	Washer 32*10*10	1
R813	3003201	Valve cover	1	R842	2065712	Fix plate	1
R814	3005074	IPL 6-01	2	R843	3005270	Pressing roller	1
R815	3005066	IPL 8-01	1	R844	6000141	Washer 20	1
R816	2065716	Knob M12*35	1	R845	2065715	Screw M20*95	1
R817	6000381	Nut M12	1	R846	2065713	Washer	1
R818	2065692	Rotating arm	1	R847	6000116	Screw M10*15	1
R819	2065696	Rod	1	R848	6000184	Screw M10*35	6
R820	3005200	Pressing head	1	R849	6000197	Washer 10	6
R821	6000134	Washer 10*22*2	1	R850	6000134	Flat washer10*22*2	6
R822	6000116	Screw M10*15	1	R851	2065720	Base plate	1
R823	6000425	Screw M12*20	1	R852	6000396	Screw M16	3
R824	2065698	Washer	1	R853	6000420	Screw M16*285	1
R825	2065700	Lifting plate	1	R854	2065719	Support foot	1
R826	2065707	Screw M16*105	1	R855	6000143	Nut M10	2
R827	6000136	Flat washer 16	2	R856	6000134	Washer 10*22*2	4
R828	6000145	Nut M16	1	R857	6000290	Screw M10*60	2
R829	2065541	Handle	1				

2065717 Rise and fall cylinder assemble (Fig.14)								
R860	2065717	Rise and fall cylinder assemble	1		868	6000135	Flat washer 12	1
861	2065536	Piston rod	1		869	6000242	Screw M12	1
862	2039601	Front cover	1		870	2065538	Rod	4
863	3005043	O seal 82*2.6	2		871	2065539	Cylinder	1
864	3005027	Seal	2		872	2039701	Rear cover	1
865	3001001	Y seal 20*36*8	1		873	6000148	Screw M8	8
866	3001101	Gland	1		874	3005074	IPL 6-01	2
867	2039801	Piston	1					
1011814 main body② (Fig.15)								
S908	2065822	Arm	1					

**Remark : Other spare parts in Fig. 15, please refer to 《①spare part list》 .**

## 15.Exploded Drawings ①

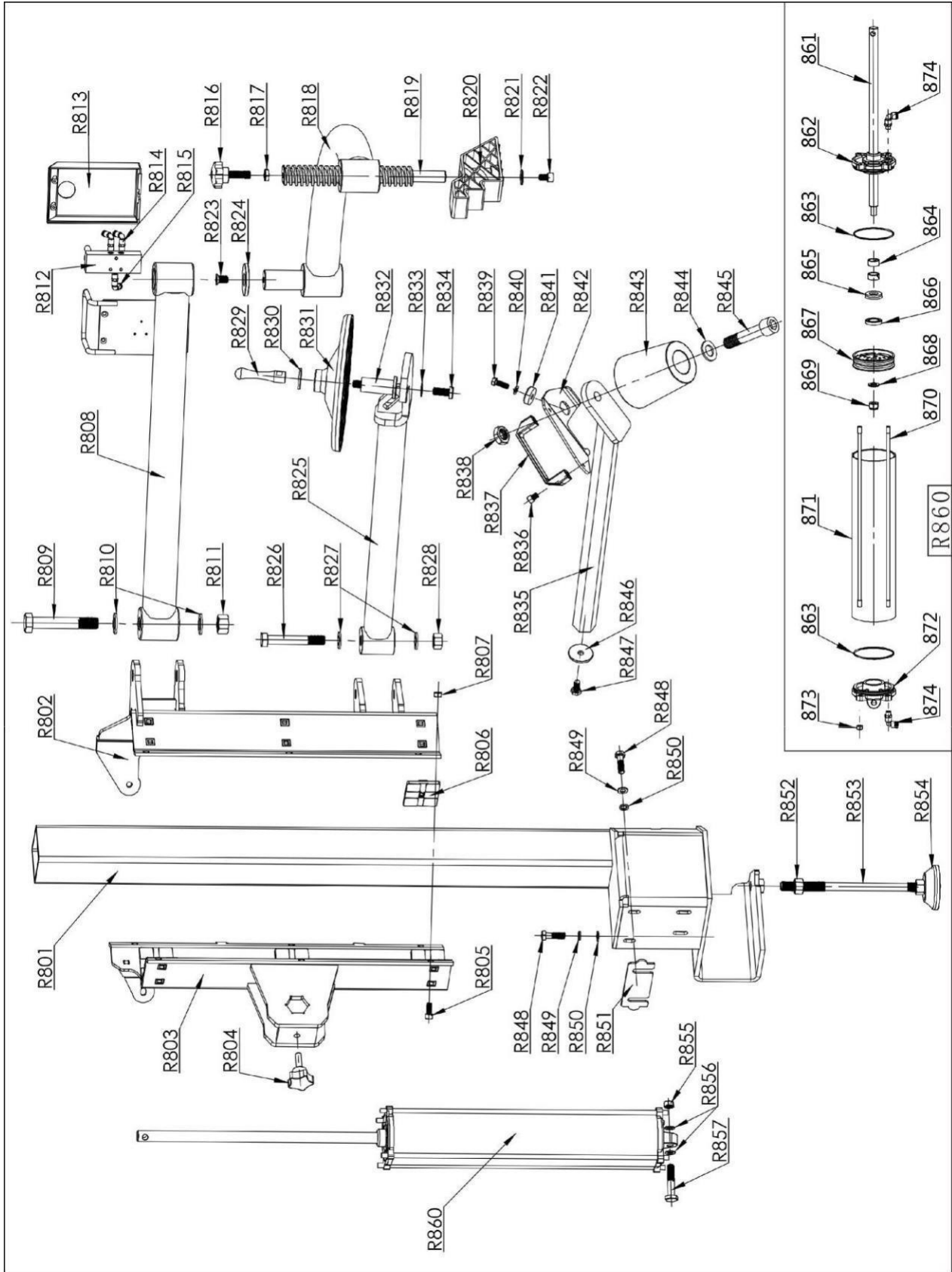


Fig.14

This diagram is an exploded view of a mechanical assembly, likely a piece of industrial equipment. It shows the main body and various sub-assemblies. Key components and their labels include:

- Main Body:** Labeled with R801, R802, R803, R804, R805, R806, R807, R848, R849, R850, R851, R855, R856, R857, R852, R853, R854.
- Top Assembly:** Includes R812, R813, R814, R815, R829, R830, R831, R832, R833, R834, R839, R840, R841, R842, R843, R844, R845.
- Intermediate Assembly:** Includes R825, R826, R827, R828, R835, R836, R837, R838, R846, R847, R842, R848, R850.
- Bottom Assembly:** Includes R860, R861, R862, R863, R864, R865, R866, R867, R868, R869, R870, R871, R872, R873, R874.
- Other Components:** S908, R809, R810, R811, R812, R813, R814, R815, R829, R830, R831, R832, R833, R834, R839, R840, R841, R842, R843, R844, R845, R846, R847, R848, R849, R850, R851, R855, R856, R857, R852, R853, R854.

The diagram uses standard engineering conventions for exploded views, with dashed lines indicating the assembly path and alignment of the parts.

11

## Appendix 1 : Air passage diagram

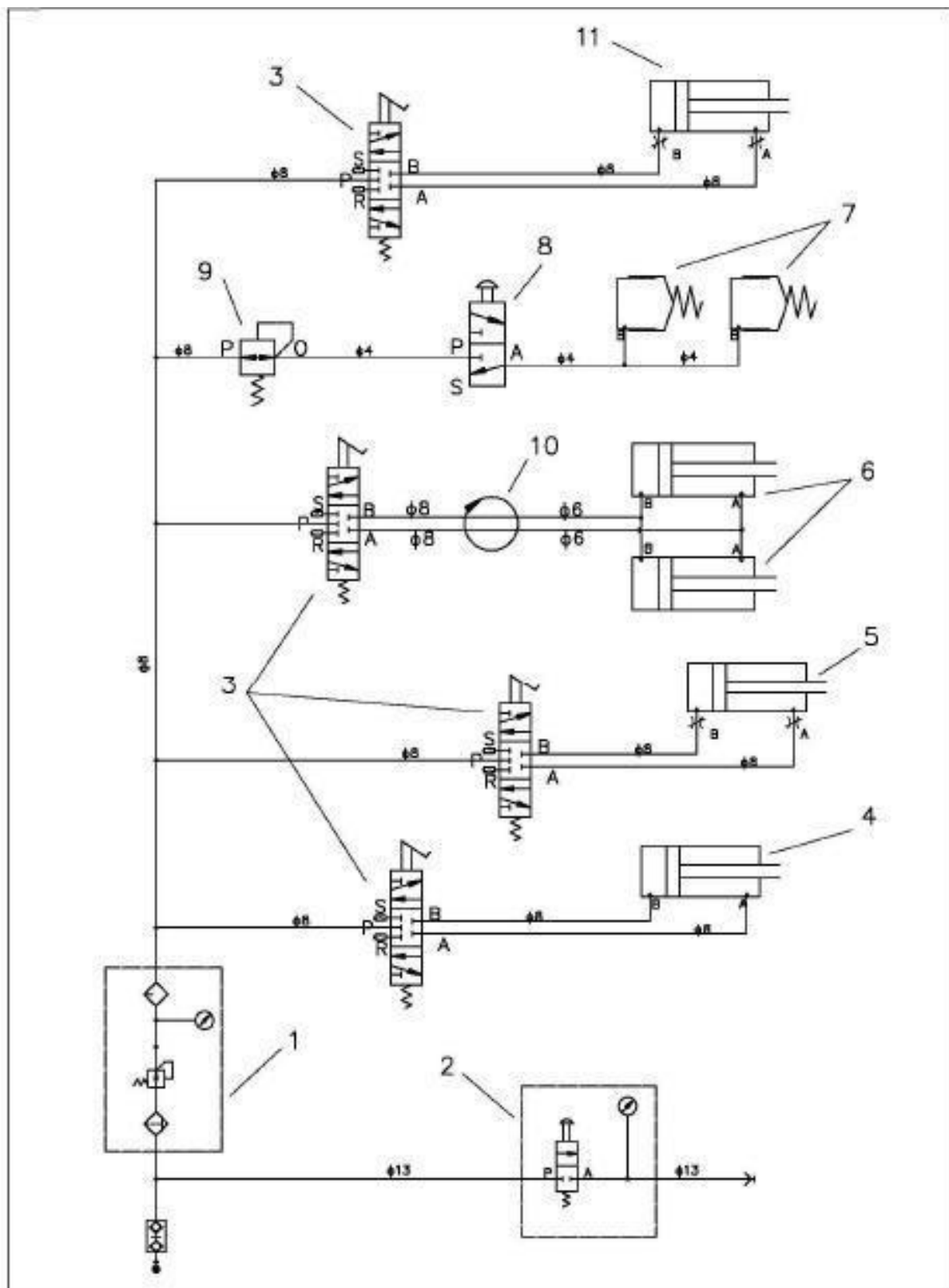


Fig.16



## Dear Customer!

CASTEX would like to thank you and congratulate you on your purchase. Please be advised that the product purchased by you is guaranteed 12 months from the date of purchase. This Warranty Card is valid only with the proof of sale or the signature and stamp of the seller. As part of the warranty, all defects will be removed free of charge, provided that they are caused by manufacturing or technical defects of the product and that the device has been used in accordance with its intended purpose and with the requirements contained in the instruction manual. Please read the detailed warranty conditions.

This warranty does not exclude or limit the buyer's rights arising from the non-conformity of the goods with the contract.

**Warranty card number .....**

### *FILLED IN BY THE SELLER*

Date of sale of the product (in the absence of an entry, a proof of sale must be attached)
Product name and symbol
Customer*) Customer's address
Seal and signature of the Seller (in the absence of a seal and signature, the Seller is considered to be the Guarantor, i.e. CASTEX Anna Bednarz based on proof of sale)
Customer Signature

***Note: without completing all the above points, the warranty card is invalid!***

Service Repairs		
Lp.	Repair description	Date, signature and stamp

***\*) The owner of the equipment submitting claims under the warranty is obliged to provide personal data, in accordance with Art. 23 section 1 point 3 of the Act on the Protection of Personal Data of 29.07.1997 as amended.***

## PROTOCOL OF RECEIPT OF GOODS

**I hereby confirm the receipt of the device according to the following specifications on..... .**

The received device is complete and in accordance with the order.

Contract specifications		Pieces
1		
2		
3		
4		
5		

Date

Stamp and signature

.....

**Receipt for the Guarantor of receipt of the warranty card NR ; .....**

Warranty Card No. - .....

Serial Number - .....

Name, Surname, buyer's address, phone number

.....

Sale date

.....

I confirm the receipt of the GOODS and the warranty card, which I have read and accepted the warranty conditions:

.....

Date and legible signature

**In the case of a distance purchase, this coupon must be sent back to the guarantor within 14 days from the date of purchase of the device**



## Warranty conditions

1. CASTEX, hereinafter referred to as the Guarantor, provides a guarantee for the efficient operation of the above-mentioned equipment within 12 months from the date of purchase. This guarantee includes:
  - a) Spare parts
  - b) Structural elements of the device
  - c) Arrival of an authorized CASTEX service technician to remove defects.
2. The warranty for the device sold outside the Republic of Poland covers only spare parts, unless otherwise agreed.
3. The warranty does not cover defects caused by:
  - a) usual material consumption, abuse, overload, incorrect installation or failure to carry out regular maintenance.
  - b) negligence of the purchaser or conduct inconsistent with the recommendations contained in the user manual.
  - c) failure to comply with the instructions for operation, non-compliance with the frequency of maintenance work specified by the manufacturer, poor power source (rotating field, rated voltage, etc.) or improper use (overload, installation outside a closed building, technical changes) or improper assembly.
  - d) Damage to the device as a result of fire, flood, lightning strike or other natural disasters, wars, social unrest, accidents, power grid over voltages, improper electrical connections, moss damage to the varnish, corrosion caused by washing under pressure or abandonment of maintenance or lack of cleaning.

CASTEX is not responsible for damage to the device caused during transport (in the event that the transport is not ordered by CASTEX). The Recipient is obliged to check the visual condition of the device and in the event of defects, the Recipient is obliged to immediately report this fact to CASTEX or the Distributor. You should write a damage report with the Courier delivering the device at the time of delivery.

4. In the event of damage to the equipment covered by the warranty, the Guarantor, after checking the correctness of the complaint, will provide free repair or in the event of inability to repair – replacement of damaged parts. The repair time will not exceed 30 days from the date of written or e-mail notification of the occurrence of failure.
5. Specialized repairs, requiring the import of components from abroad: in this case, the repair time can be extended by another 30 working days. The method of repair is determined by the Guarantor.
6. Devices that require adjustments or maintenance from time to time, which are described in the device manual, may be made by the User, unless the instruction provides otherwise.
7. Any damage caused as a result of operation and maintenance of the device not in accordance with the instructions, improper transport, operation of the device in climatic conditions inconsistent with those specified in the instructions or other reasons caused by the User may be repaired at his expense.
8. In the event of an unjustified complaint, the User covers the costs incurred by the

Guarantor, which include: commuting, the cost of technical inspection, the cost of the replaced components, the cost of courier transport in both directions.

9. The Owner of the device is responsible for all activities related to the maintenance of the device.
10. Devices equipped with electronic parts should be stored and used in rooms where the air temperature is in the range from + 8 to 25 degrees C.
11. CASTEX reserves the right to refuse to provide free is services in the absence of a warranty card.
12. In the case of purchase of a device /devices at a distance, the Buyer undertakes to send back to the Seller / Guarantor page No. III - the protocol of receipt and receipt for the Guarantor. In the event of failure to send the protocol and the operation of the Guarantor, the Guarantor may refuse to provide free service.
13. All complaints should first be reported to the address of the serwis@castex.pl or via the website <https://castex.pl/formularz-reklamacyjny/>

